

User Manual MAP Toolkit

1 PURPOSE

This document explains the procedures and prerequisites for performing a MAP Toolkit inventory scan.

The Microsoft Assessment and Planning Toolkit (MAP) is an agentless, automated, multi-product planning and assessment tool for quicker and easier desktop, server and cloud migrations. MAP provides detailed readiness assessment reports and executive proposals with extensive hardware and software information, and actionable recommendations to help organizations accelerate their IT infrastructure planning process, and gather more detail on assets that reside within their current environment.

The current version is: 9.1

You can download the latest version [here](#).

2 PREREQUISITES

MAP Toolkit version 9.1 has the following prerequisites:

- **Hardware Requirements:**

A computer with at least the following minimum configuration:

- A dual-core 1.5GHz processor
- 2.0 GB of RAM
- 1 GB of available disk space
- Network adapter card
- Graphics adapter that supports 1024x768 or higher resolution. At 1024x768, using a DPI setting of more than 100% is not supported. At higher resolutions, DPI settings higher than 100% are supported.

Note: Inventory, assessment, and reporting performance are based primarily on the speed of the CPU and the amount of available RAM.

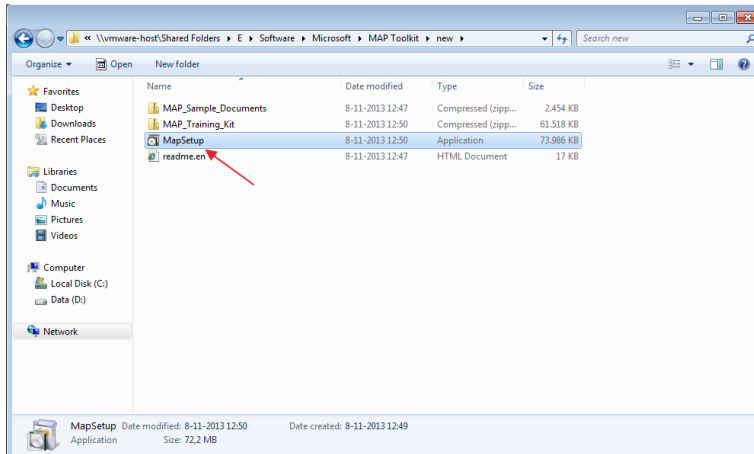
- **Software Requirements:**

- Operating system. Any of the following:
 - Windows 8.1 (Professional and Enterprise editions only)
 - Windows 8 (Professional and Enterprise editions only)
 - Windows 7 with Service Pack 1 (Professional, Enterprise, and Ultimate editions only)
 - Windows Server 2012 R2
 - Windows Server 2012
 - Windows Server 2008 R2 with Service Pack 1
- .NET Framework 4.5 (download from <http://go.microsoft.com/fwlink/?LinkId=389161>)
- Installation of all updates for the operating system. Note: In some cases updates may not install automatically. To download updates for your computer manually, go to <http://update.microsoft.com>.
- By default, the MAP Toolkit will install SQL Server 2012 Express LocalDB during setup. You may also use an existing installation of SQL Server 2008, SQL Server 2008 R2, or SQL Server 2012 if you create an instance named "MAPS" before running the MAP Toolkit installer. The MAP Toolkit requires the collation order of the database engine to be set to "SQL_Latin1_General_CP1_CI_AS".

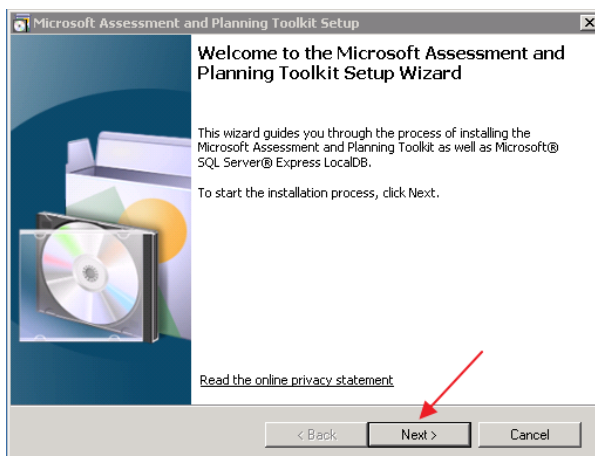
Note: Some of these prerequisites require restarting your computer. You may have to restart multiple times if all the prerequisites are not met prior to running Microsoft Assessment and Planning Toolkit setup.

3 INSTALLATION

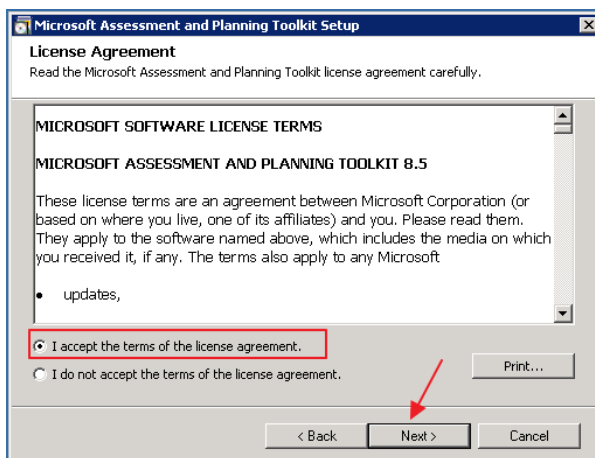
1. Download the latest version of MAP Toolkit from the Microsoft Website (<http://www.microsoft.com/en-us/download/details.aspx?id=7826>)
2. Run MapSetup



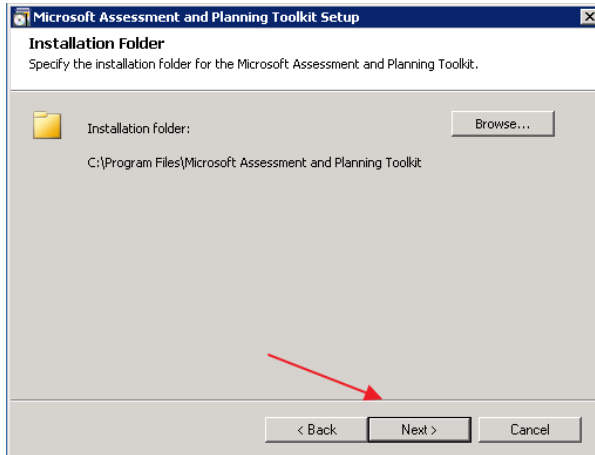
a.



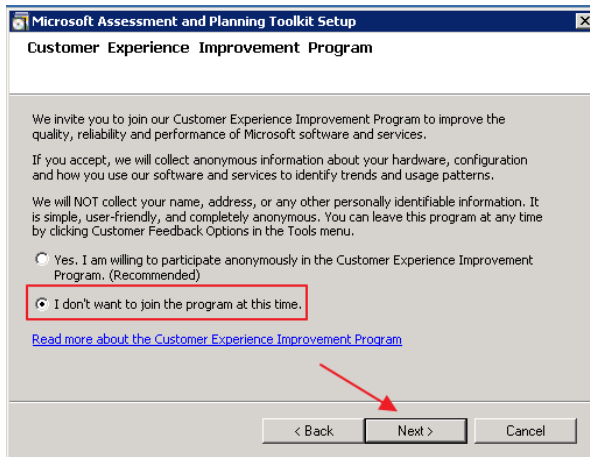
b.



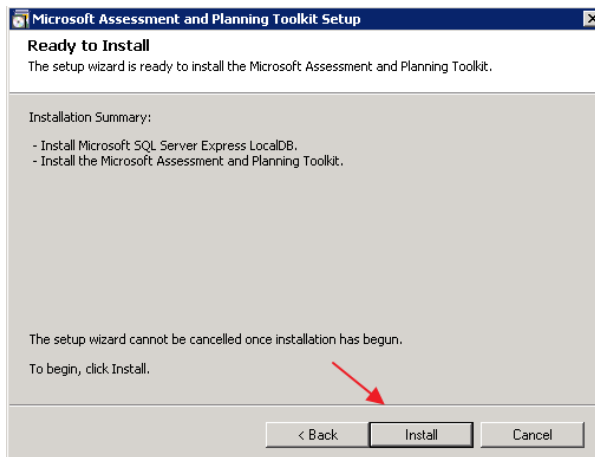
c.



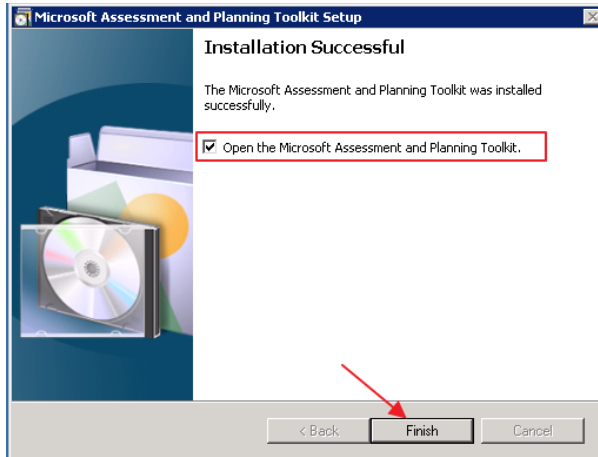
d.



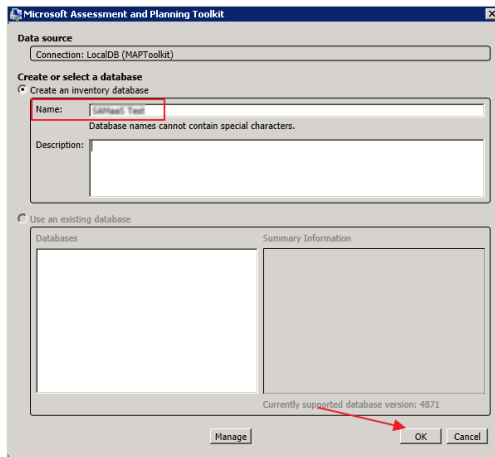
e.



f.



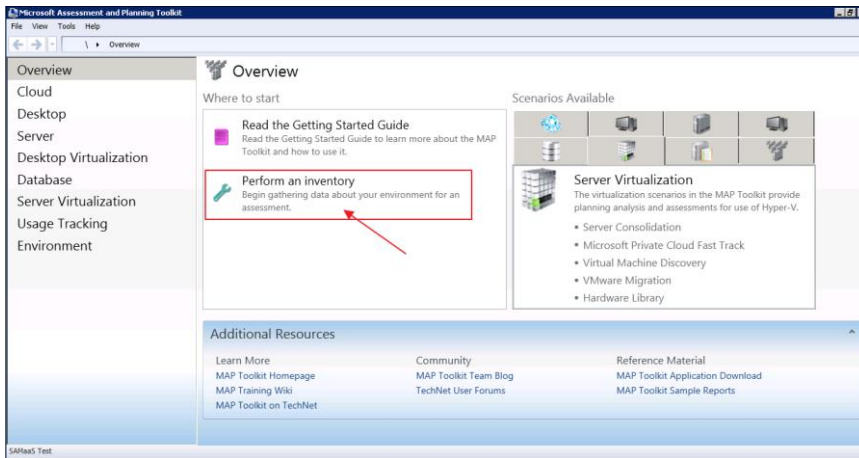
g.



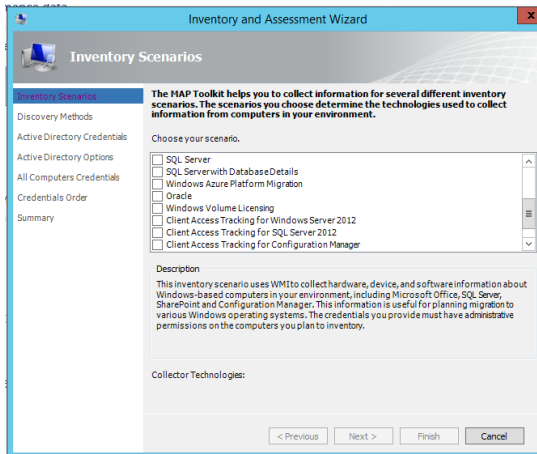
h.

4 SCAN

1. Within the application Choose 'Perform an Inventory' to start the scan

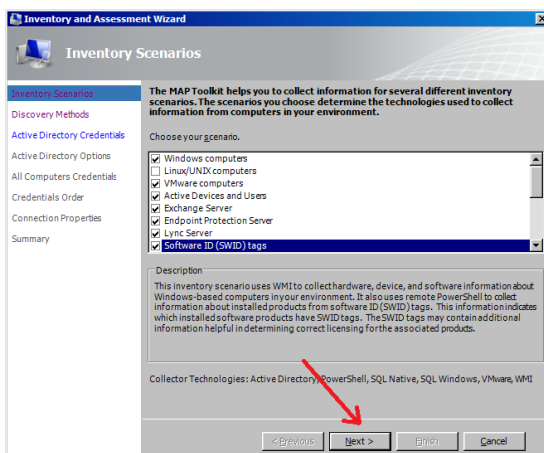


2. The following screen appears:

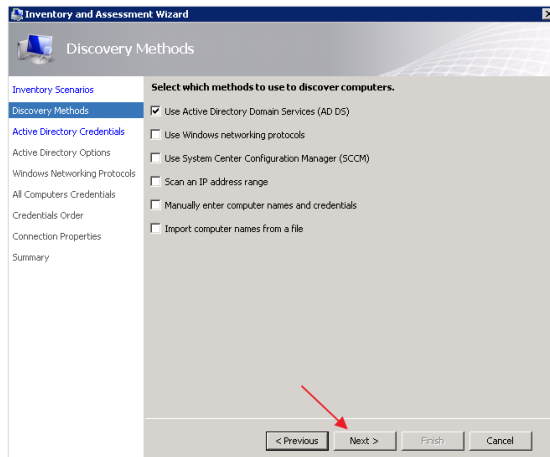


Select all options

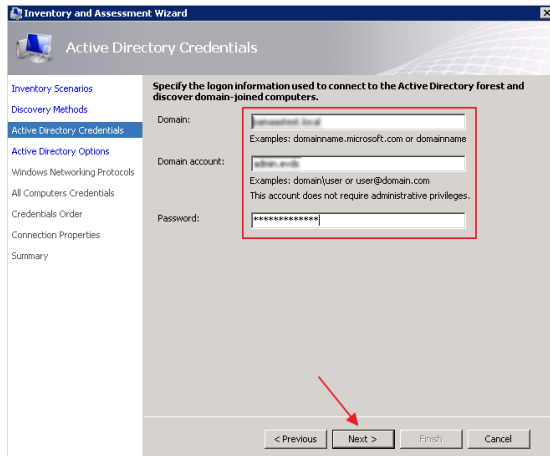
3. click **Next**



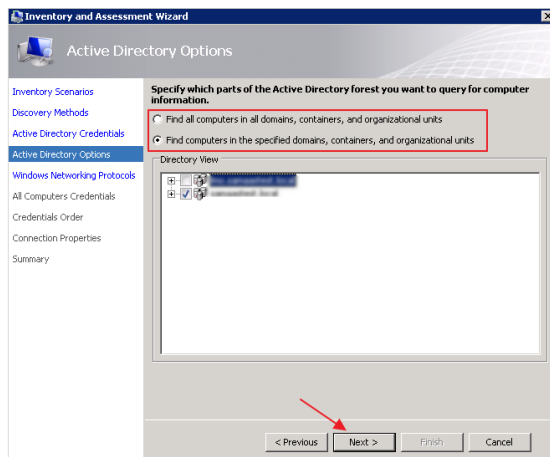
4. Choos 'Use Active Directory Domain Services (AD DS)'



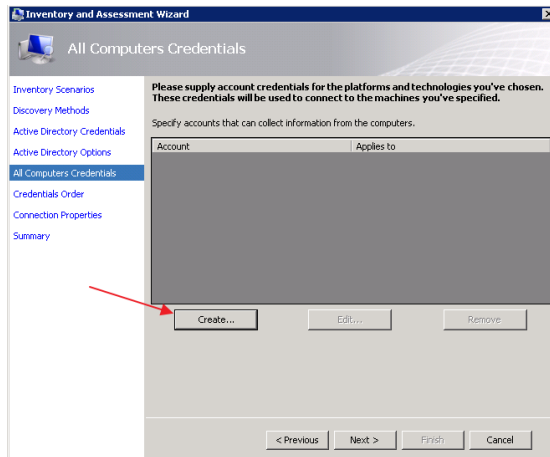
5. Enter the AD credentials in (don't forget to specify the domain as well)



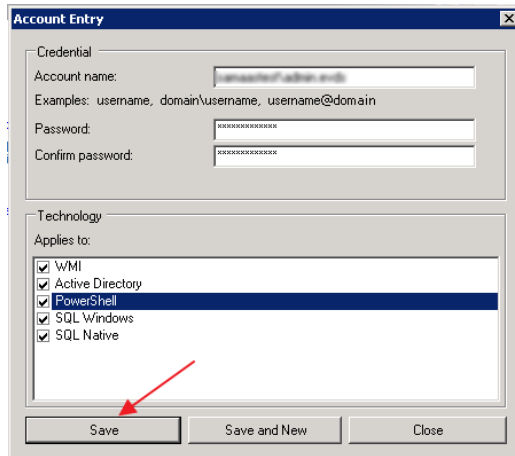
6. Select the AD domein



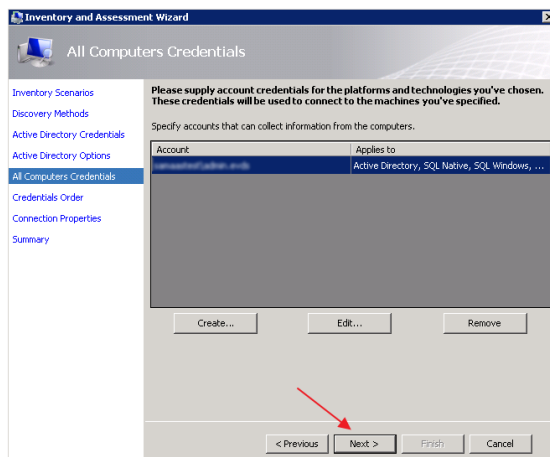
7. Click **Create** in **All Computers Credentials**



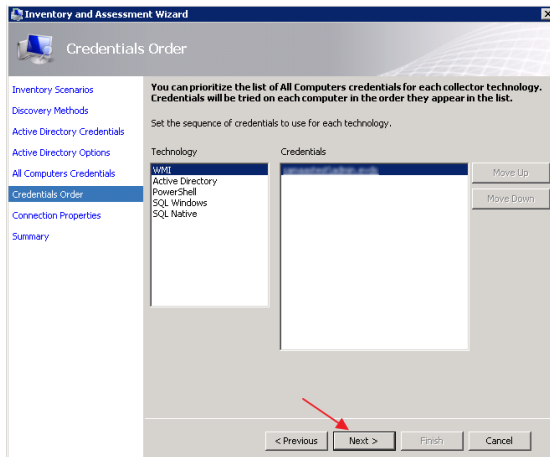
8. Enter the **credentials** and select all **Technologies**



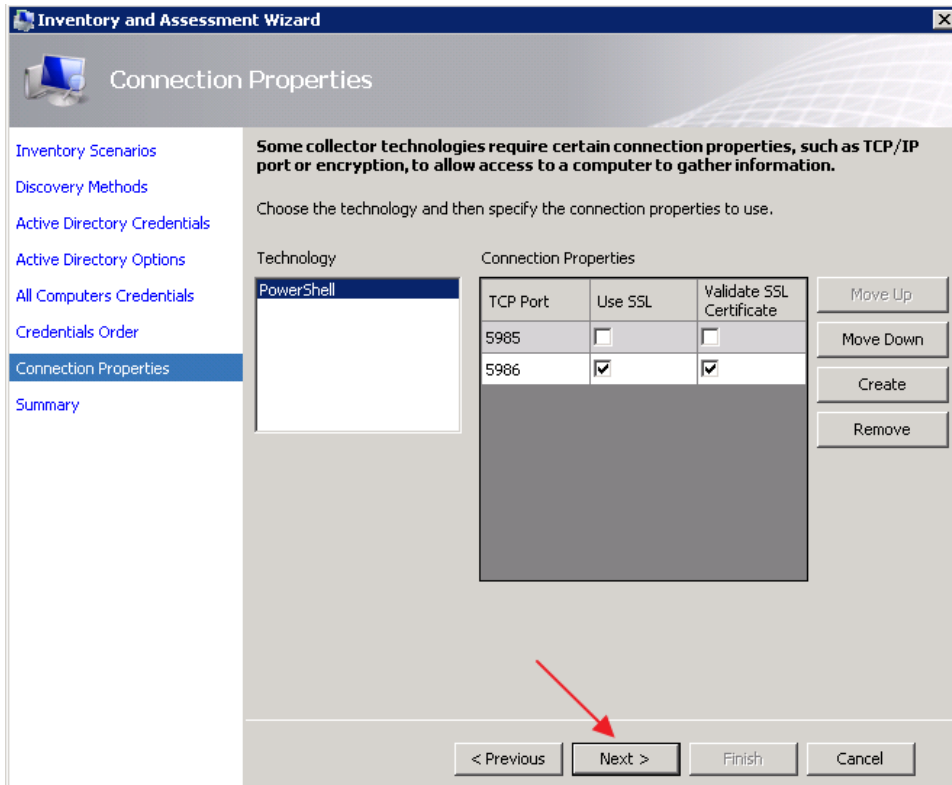
9. Click **Next**



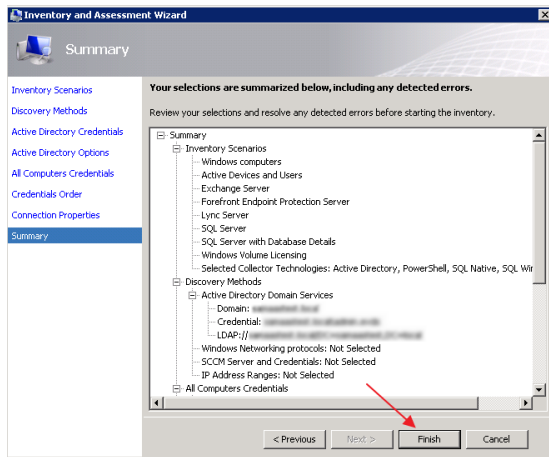
10. If you wish you can prioritize the inventory technology what will be used



11. Check the PowerShell settings

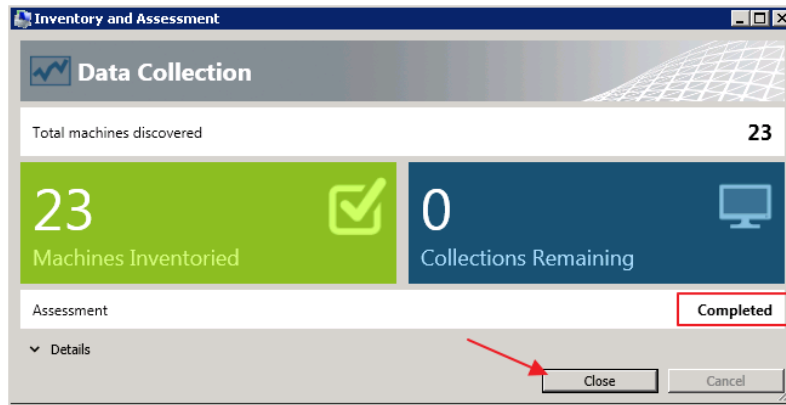


12. Check the overall settings and click **Finish**



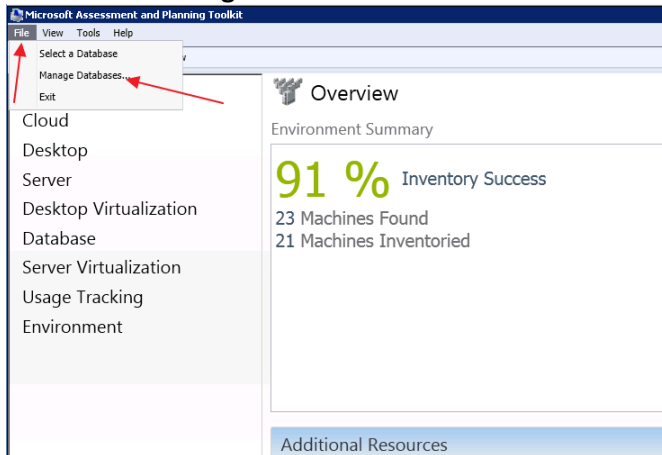
13. The inventory scan will **automatically** start

14. click **Close**, when the scan has finished

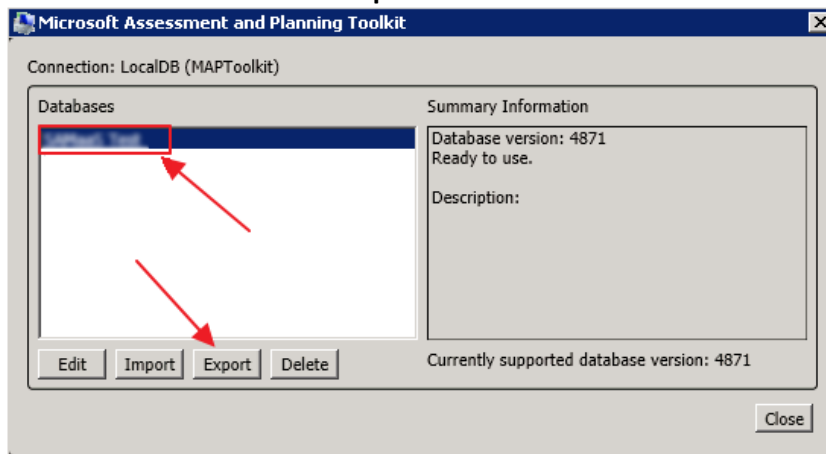


5 BACK-UP DATABASE

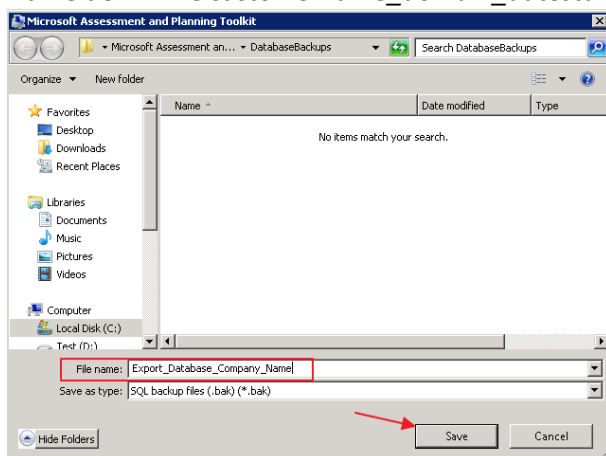
1. Click **File** → **Manage Databases...**



2. Select the Database and click **Export**



3. Name the DB like *customername_domain_datestamp* and click **Save**



4. click **OK**

6 SEND THE RESULTS

Please upload the DB backup (.bak file) in Zipped format.